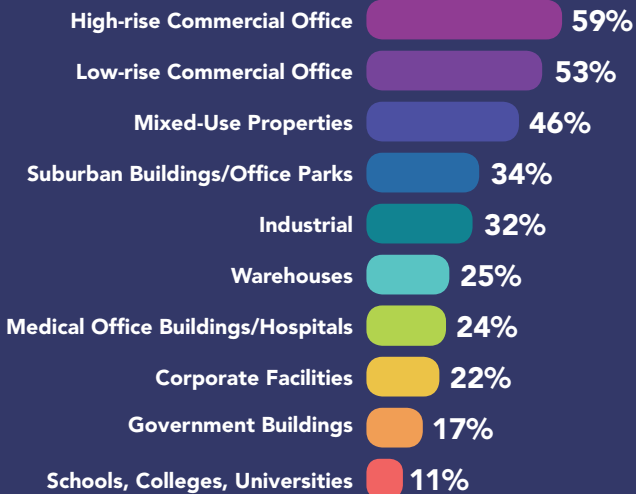


MEET YOUR NEXT CUSTOMERS

Every year exhibitors report that BOMA brings the right people—those who make the decisions and are ready to close deals. It is the central marketplace for the **\$40.8 billion** commercial real estate industry.

TYPES OF BUILDINGS MANAGED

Reach every sector of commercial real estate, including the fast-growing industrial market.

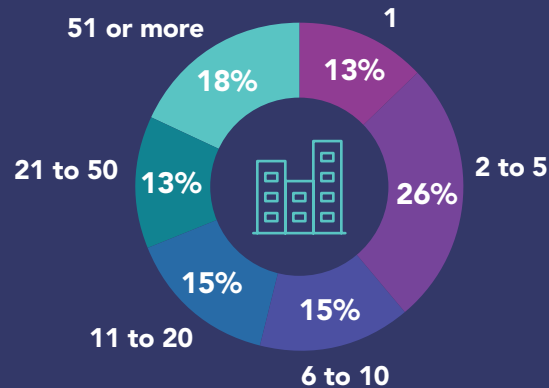


The people that are here are from the right kinds of companies and the right level in that company. Our goal was around 50 to 75 leads a day, and we get that here."

— Laurie Conner, The Detection Group, Sunnyvale, CA

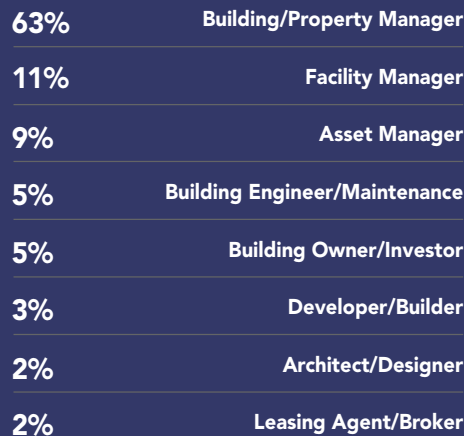
NUMBER OF BUILDINGS MANAGED

Do business with attendees representing companies of all sizes, from national corporations to specialized organizations—an impressive **87%** manage multiple buildings.



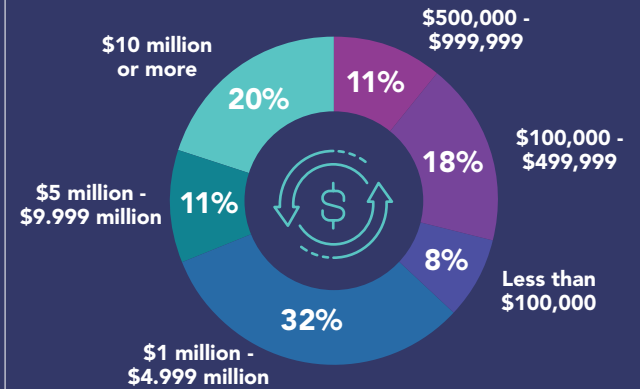
ATTENDEE JOB ROLES

Find property professionals from across the industry and country—they're here looking for new solution providers *like you*.



ANNUAL SPENDING—BUILDING PRODUCTS AND SERVICES

Connect with decision makers who have purchasing power and control significant budgets—**63%** decide on over \$1 million for building products and services.



SQUARE FOOTAGE MANAGED

Expand across a huge territory—**95%** of attendees manage more than 100,000 square feet of commercial space, and **48%** are responsible for more than 1 million square feet.

